



# Mid Day Meal Scheme

Conference of State Education Secretaries  
on 01.08.09 at New Delhi.



- 
- PART-I Proposed Modifications in MDM Scheme.**
- PART-II System Related Issues for Discussion**
- PART-III Pending Issues.**
- PART-IV Performance Assessment 2008-09.**

## PART -I

# Proposed changes in MDM Scheme

---

### 1. Rationalization of cooking cost:

- (a) Rationalization of cooking cost norms on the basis of average market prices of items in the MDM basket and excluding labour charges.
- (b) Factoring of Inflation through a separate price index developed by Labour Bureau, Shimla

# Proposed changes in MDM Scheme (contd.,)

---



## 2. Remuneration to Cooks & Helpers:

- (a) Introduction of a new component
- (b) Norms for number of manpower
- (c) Norms for adequate remuneration
- (d) Sharing ratio : 90:10 for NER States and 75:25 Other States/UTs.

# Proposed changes in MDM Scheme (contd.,)

---



## 3. Assistance for construction of Kitchen sheds:

- (a) Cost is to fixed on the basis of State Schedule of Rates for each States like in SSA.
- (b) Sharing ratio : 90:10 for NER States and 75:25 Other States/UTs.

# Proposed changes in MDM Scheme (contd.,)

---



## 4. Changes in Management structure and fund flow systems:

- (a) Formation of separate State/UT level society.
- (b) Funds to be released to joint bank accounts of society maintained at State, District, Block and School levels.
- (c) Payment to FCI at District level.
- (d) Web enabled MIS

# Proposed changes in MDM Scheme (contd.,)

---



## 5. Transport Assistance in Special Category States:

To be made at par with PDS in the case of 8 NER States, Uttarakhand, Himachal Pradesh and Jammu & Kashmir.

## PART -II



# System related issues for discussion

---

- Proper utilisation of MME component.
- Entrusting Implementation to village/Nagar Panchyat
- State level review in State/UT capital.
- Periodicity of food grain lifting.



**PART - III**

# **Pending Issues**



## Pending Issue: Insufficient State Budget provision: 2009-10 (Primary)

---

- 14 States/UTs : Sufficient provisions made in State Budget.  
(Arunachal Pradesh, Maharashtra, Bihar, Haryana, Jharkhand, Orissa, Punjab, Rajasthan, Uttarakhand, Uttar Pradesh, Dadar & Nagar Haveli, Lakshadweep, Daman & Diu, Delhi)
- 21 States/UTs: Information not provided  
Andhra Pradesh , Assam, Chhattisgarh, Goa, Gujarat, Himachal Pradesh, Jammu & Kashmir, Karnataka, Kerala, Madhya Pradesh, Manipur, Meghalaya, Mizoram, Nagaland, Sikkim, Tamil Nadu, Tripura, West Bengal, Andaman & Nicobar, Chandigarh and Puducherry.



**Pending Issue:  
Insufficient State Budget provision: 2009-10  
(Upper Primary)**

---

- **14 States/UTs: Sufficient provisions made in State Budget.**  
**Arunachal Pradesh, Assam, Bihar, Haryana,  
Maharashtra, Orissa, Punjab, Rajasthan, Uttarakhand  
Uttar Pradesh, Dadra & NH, Delhi, Lakshadweep,  
Daman&Diu**
- **21 States/UTs: Information not provided**  
**Andhra Pradesh, Chhattisgarh, Goa, Gujarat,  
Himachal Pradesh, Jammu & Kashmir, Jharkhand  
Karnataka, Kerala, Madhya Pradesh, Manipur,  
Meghalaya, Mizoram, Nagaland, Sikkim, Tamil Nadu,  
Tripura, West Bengal, Andaman & Nicobar,  
Chandigarh, and Puducherry**

# Pending Issues :

## Food Grain Lifting Confirmation 2008-09



S.no	States/UTs	No of bills	Amount (Rs . in lakhs)
1	Maharashtra	11	7970.37
2	Bihar	10	4252.63
3	Andhra Pradesh	8	4221.60
4	Jharkhand	18	3935.18
5	Kerala	18	3341.18
6	Chhattisgarh	9	2111.32
7	Punjab	14	1491.84
8	Jammu & Kashmir	11	1189.08
9	West Bengal	11	1140.78
10	Assam	9	928.42

*Contd....*

# Pending Issues :

## Food Grain Lifting Confirmation 2008-09



Contd....

S.no	States/UTs	No of bills	Amount (Rs . in lakhs)
11	Himachal Pradesh	6	579.61
12	Nagaland	12	218.71
13	Sikkim	12	81.29
14	Uttarakhand	1	59.49
15	Manipur	13	46.46
16	Mizoram	4	38.59
17	Meghalaya	2	30.03
18	Arunachal Pradesh	6	24.94
19	Daman & Diu	2	7.54
20	Dadra & Nagar Haveli	1	2.51

**PENDING ISSUES :**  
**FOODGRAIN LIFTING CONFIRMATION**  
**2007-08**

<b>S.NO</b>	<b>States/UTs</b>	<b>No of bills</b>	<b>Amount (Rs . in lakhs)</b>
1	Assam	5	1100.56
2	Jammu & Kashmir	12	829.79
3	Meghalaya	4	276.65
4	Arunachal Pradesh	11	232.10
5	Nagaland	10	183.03
6	Tripura	3	167.54
7	Uttarakhand*	2	161.80
8	Mizoram	11	117.02
9	Manipur	3	49.53
10	Sikkim	2	21.56

**\*confirmation received but do not tally.**

# Pending Issues :

## Food Grain Lifting Confirmation up to 2006-07

---



S.NO	States/UTs	No of bills	Amount (Rs . in lakhs)
1	Bihar	114	4755.46
2	West Bengal	2	249.17
3	Sikkim	3	161.32
4	Gujarat	2	66.18
5	Assam	3	24.13
6	Arunachal Pradesh	2	22.60
7	Chhattisgarh	1	17.45



# Status of Quarterly Progress Reports (QPR) 2008-09

---

- **J&K** has not furnished any of the QPRs for the last 4 Qtr.
- 4<sup>th</sup> QPR is pending:

Andhra Pradesh, Arunachal Pradesh, Assam, Chattisgarh, Himachal Pradesh, J&K, Kerala, Meghalaya, Mizoram, Nagaland, Sikkim, Tamilnadu, West Bengal.

- 2<sup>nd</sup> & 3<sup>rd</sup> QPR pending:
- **Tamilnadu and Madhya Pradesh**



# USB of Central Assistance as on 31.3.09



Cooking cost:

Awaited from all States/UTs except

Arunachal Pradesh, Chhattisgarh, Delhi, Kerala,  
Jharkhand, Madhya Pradesh, Maharashtra, Punjab,  
Rajasthan, Sikkim, Tamilnadu, Tripura, Uttarakhand and UP

# Pending ATN on Audit Para C &AG 2000



❖ ATN is still awaited from :-

Andhra Pradesh

Himachal Pradesh

Meghalaya

Orissa

Chandigarh

Arunachal Pradesh

Jammu & Kashmir

Mizoram

Sikkim

Delhi

# Pending ATN on Audit Para C &AG 2007

---



❖ ATN is still awaited from :-

Assam

Kerala

Nagaland

Sikkim



**PART - IV**  
**Performance Assessment**  
**for**  
**2008-09**

**(PAT : Performance Assessment Tests)**



# PAT-1 : Coverage (2008 – 2009) [PY]

---

No.	PARAMETERS	BENCHMARK	ACHIVEMENT
1	Institutions	100%	<u>97%</u>
2	No. of days Meals served	153 days	<u>150 days</u>

# Non-Coverage (in%) PRIMARY



STATE/UTs	Total	Breakup of Non Coverage		
		Govt+LB Schools	GA Schools	EGS/AIE Centers
Manipur	24%	00%	00%	100%
Bihar	19%	18%	41%	64%
West Bengal	10%	04%	52%	06%
Utter Pradesh	03%	03%	08%	18%
Uttrakhand	03%	02%	44%	41%



# Disruption in serving MDM (PRIMAY)

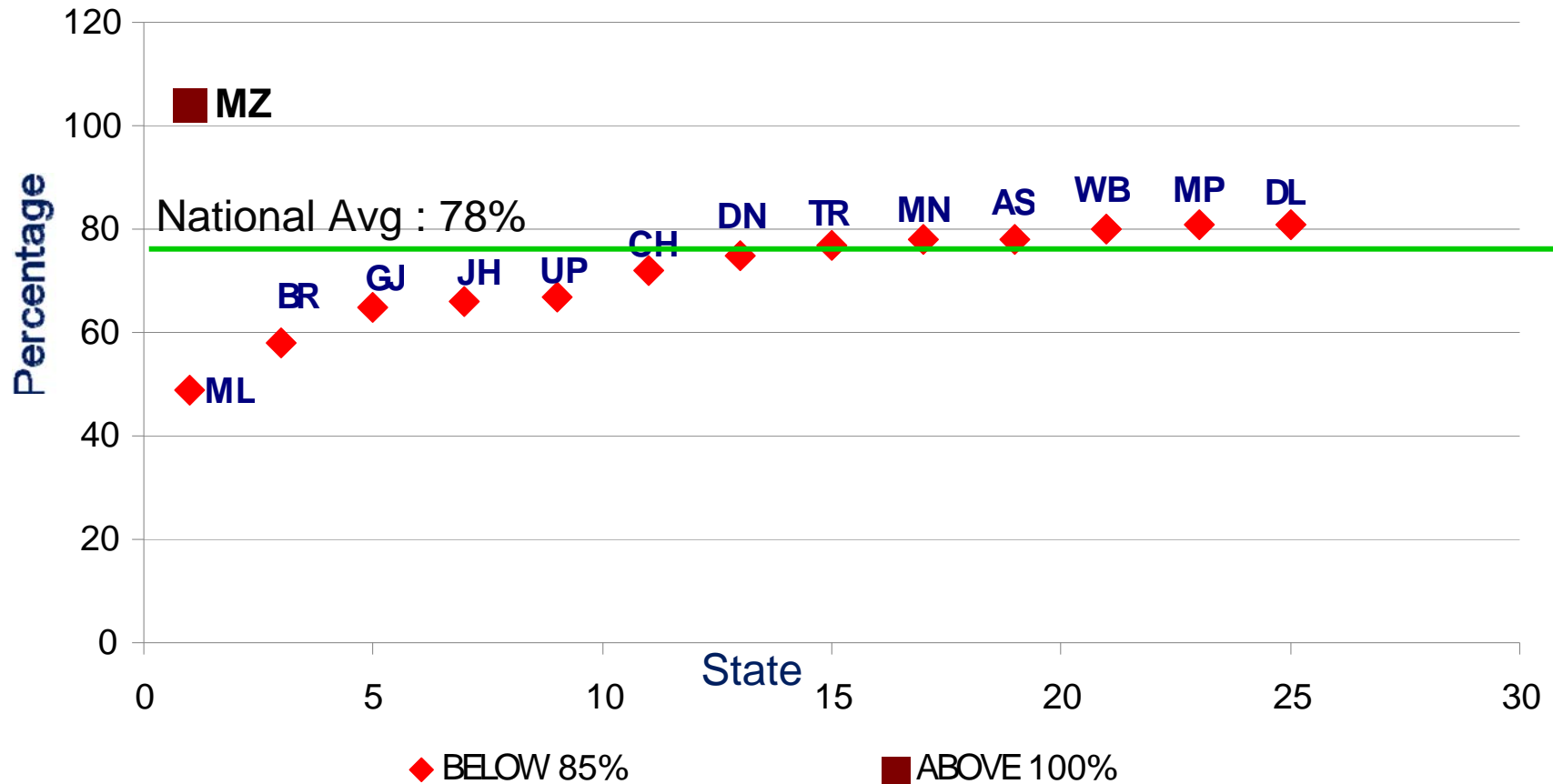


S.NO	States/UTs	No. of days to be served	No of days actually served	No of days not served
1	Manipur	168	118	50 days
2	Assam	151	107	44 days
3	West Bengal	154	113	41 days
4	Punjab	157	130	27 days
5	J&K	153	127	26 days
6	Daman & Diu	139	116	23 days



# PAT-2 Enrollment vs. Beneficiary [PY]

21 States/UTs are in between 85% to 100%.





# PAT-1A : Coverage (2008 – 2009) [Up. PY]

---



No.	PARAMETERS	BENCHMARK	ACHIVEMENT
1	Institutions	100%	<u>89%</u>
2	No. of days Meals served	153 days	<u>132 days</u>

# Non-Coverage (in%) UPPER PRIMARY



STATE/UTs	Total	Breakup of Non Coverage		
		Govt+LB Schools	GA Schools	EGS/AIE Centers
Delhi	100%	Not yet started		
Goa	100%	Not yet started		
Assam	85%	84%	100%	NA
Manipur	72%	72%	NA	NA
West Bengal	46%	State did not provide break-up		



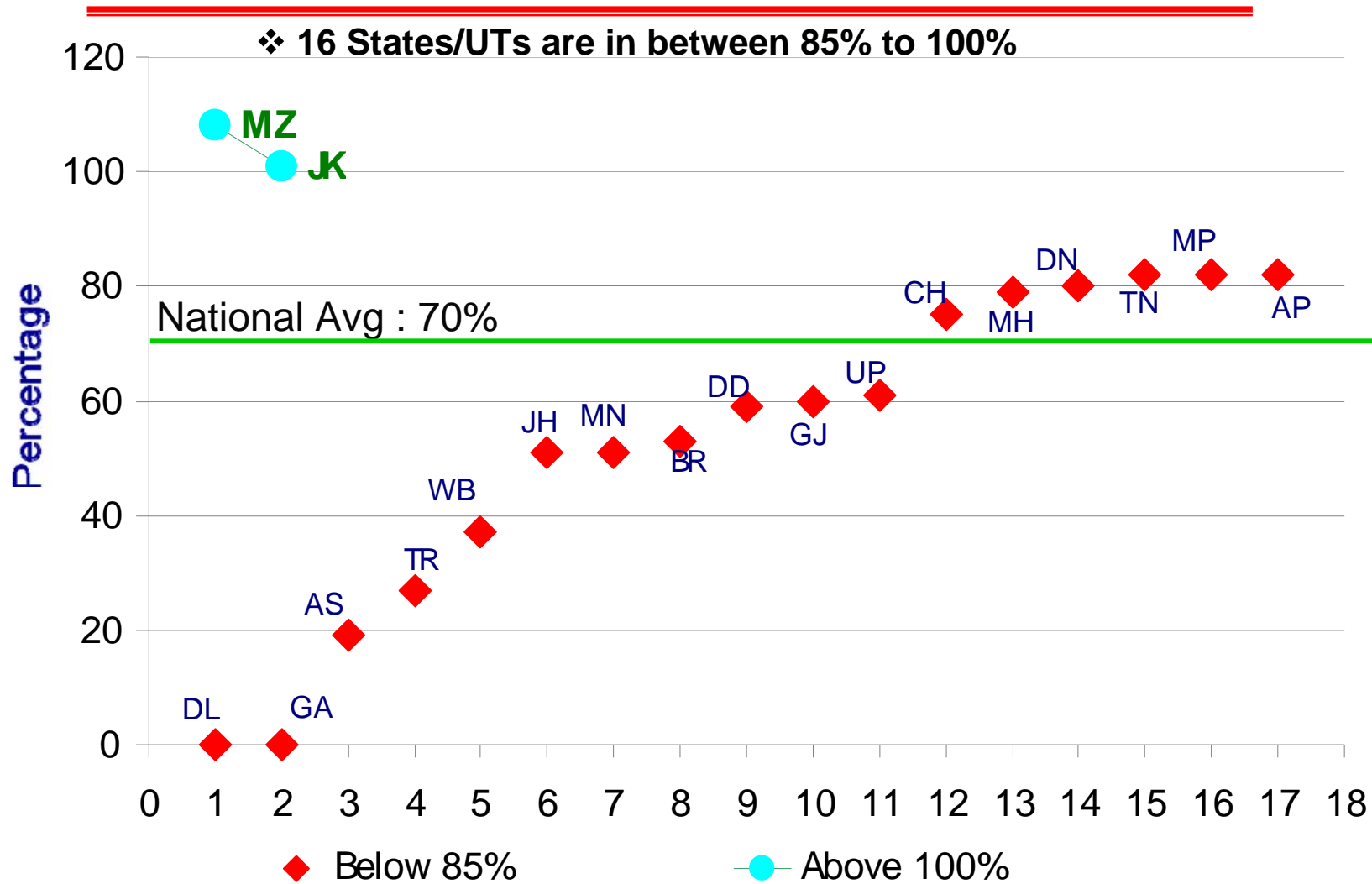
# Disruption in serving MDM (UPPER PRIMAY)



S.NO	States/UTs	No. of days to be served	No of days actually served	No of days not served
1	Goa	141	Not yet started	
2	Delhi	146	Not yet started	
3	Manipur	168	59	109 days
4	West Bengal	154	70	84 days
5	Maharashtra	156	77	79 days
6	Assam	151	88	63 days
7	Punjab	151	93	58 days
8	Mizoram	155	103	52 days



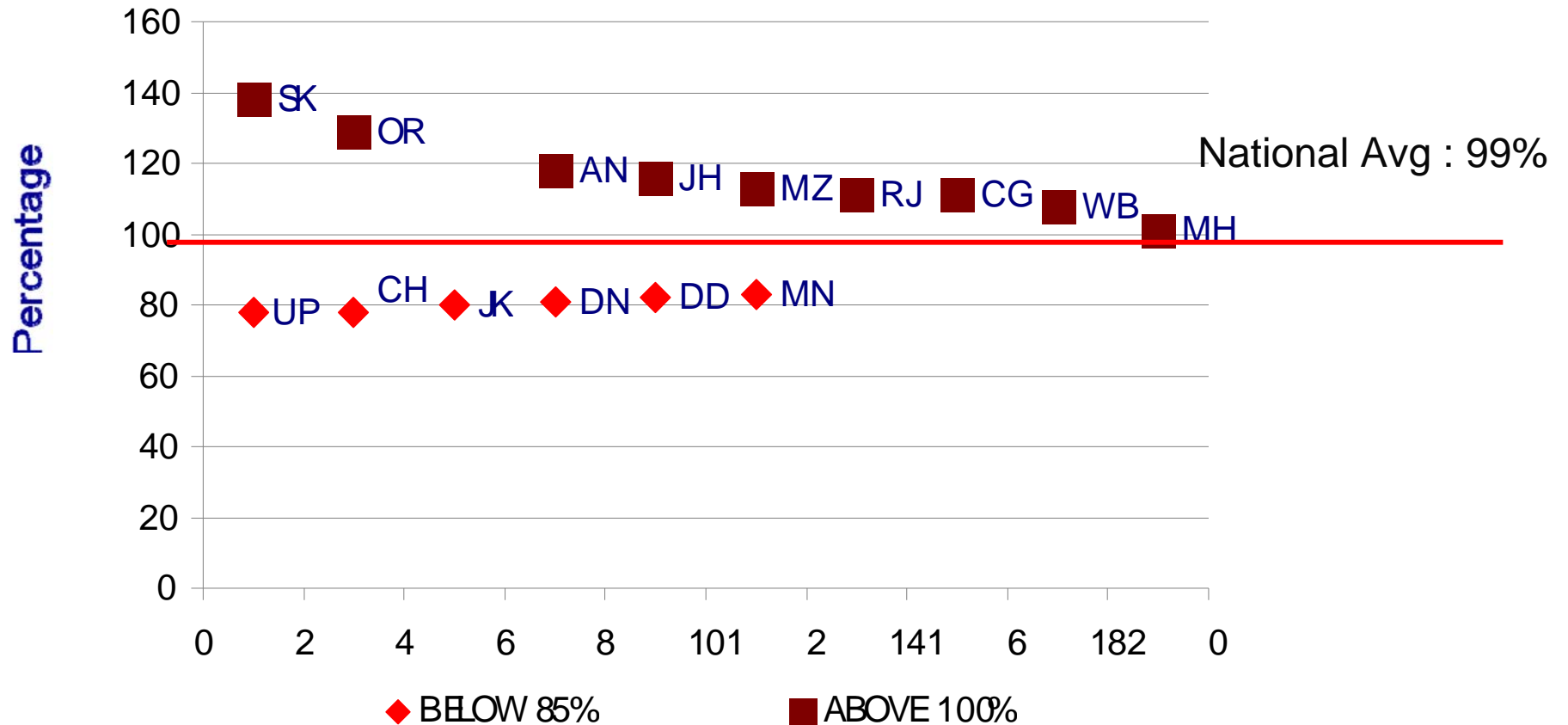
# PAT-2A Enrollment vs. Beneficiary (Up. PY)



# PAT-3 No. of children-PAB Approval vs Actual [PY]



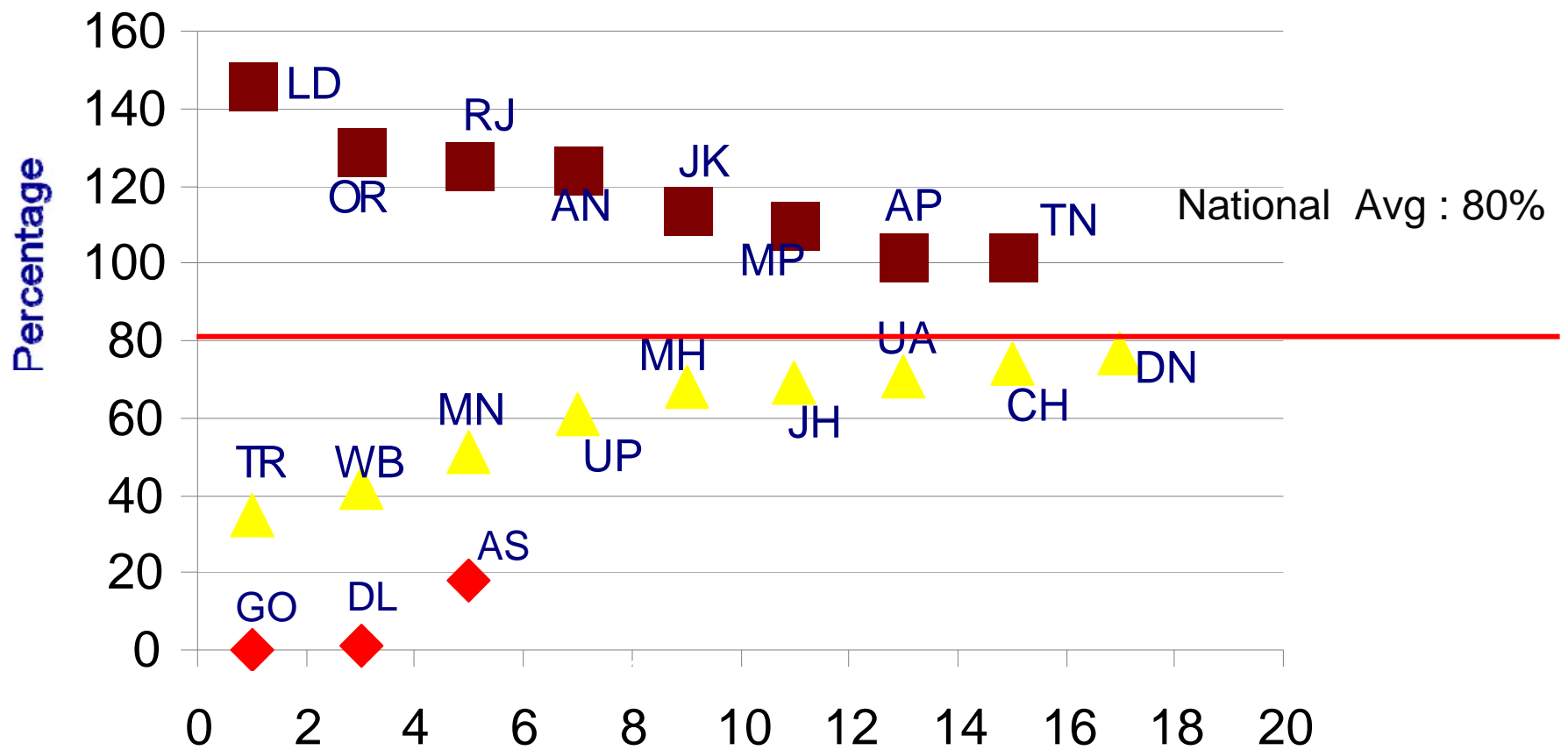
❖ 19 States/UTs are in between 85% to 100%.



# PAT-3A No. of children - PAB Approval vs Actual [Up. PY]



❖ 15 States/UTs are in between 85% to 100%.



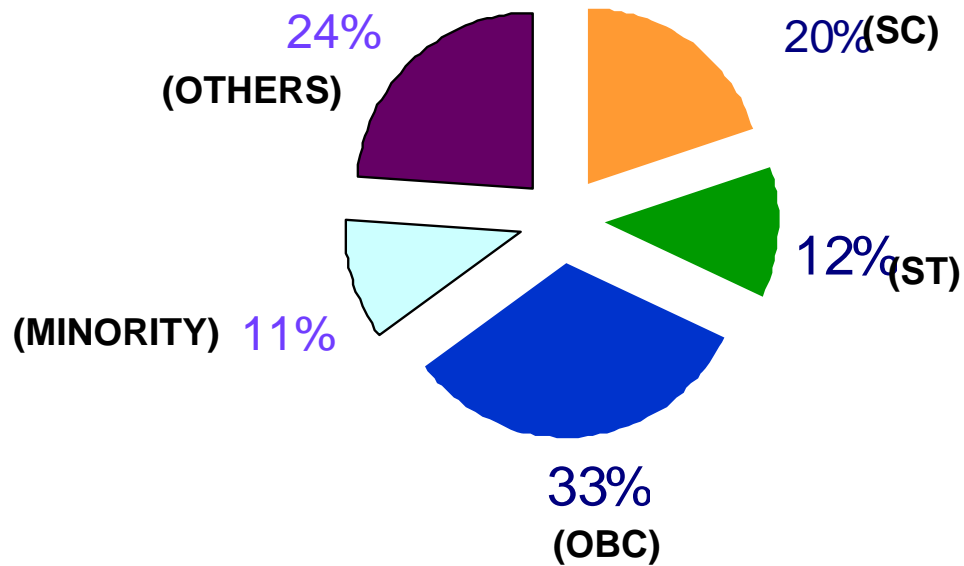
◆ Below 30%

▲ 30% To 85%

■ ABOVE 100%

# Social group wise status of children availing MDM

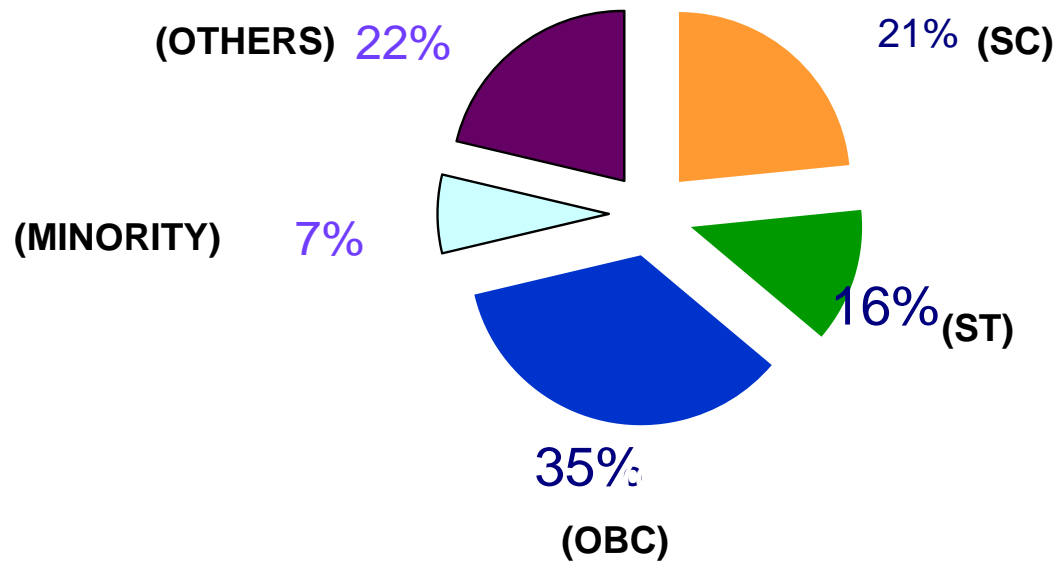
---



1. Proportion of SCs in Total Population : 16%,
2. Proportion of STs in Total Population : 8%. (Census, 2001)

# Social group wise status of Cooks Preparing MDM

---



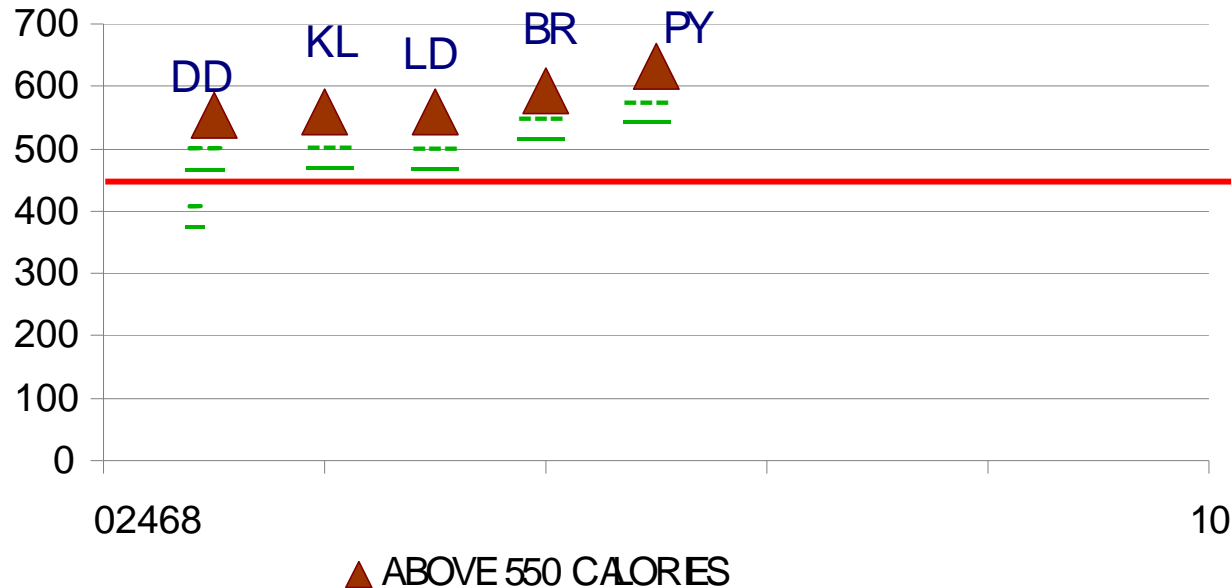
**85% of the cooks are women.**

1. Proportion of SCs in Total Population : 16%,
2. Proportion of STs in Total Population : 8%. (Census, 2001)



# PAT-4 Nutrition Norm – CALORIES (PY)

Norm of Calories = 450



NOTE : 1. INFORMATION IS NOT FURNISHED BY GOA.

Probable Reasons: **Daman & Diu** Fruits (116 cal.), **Lakshadweep**:40gms Pulses (90 cal.),

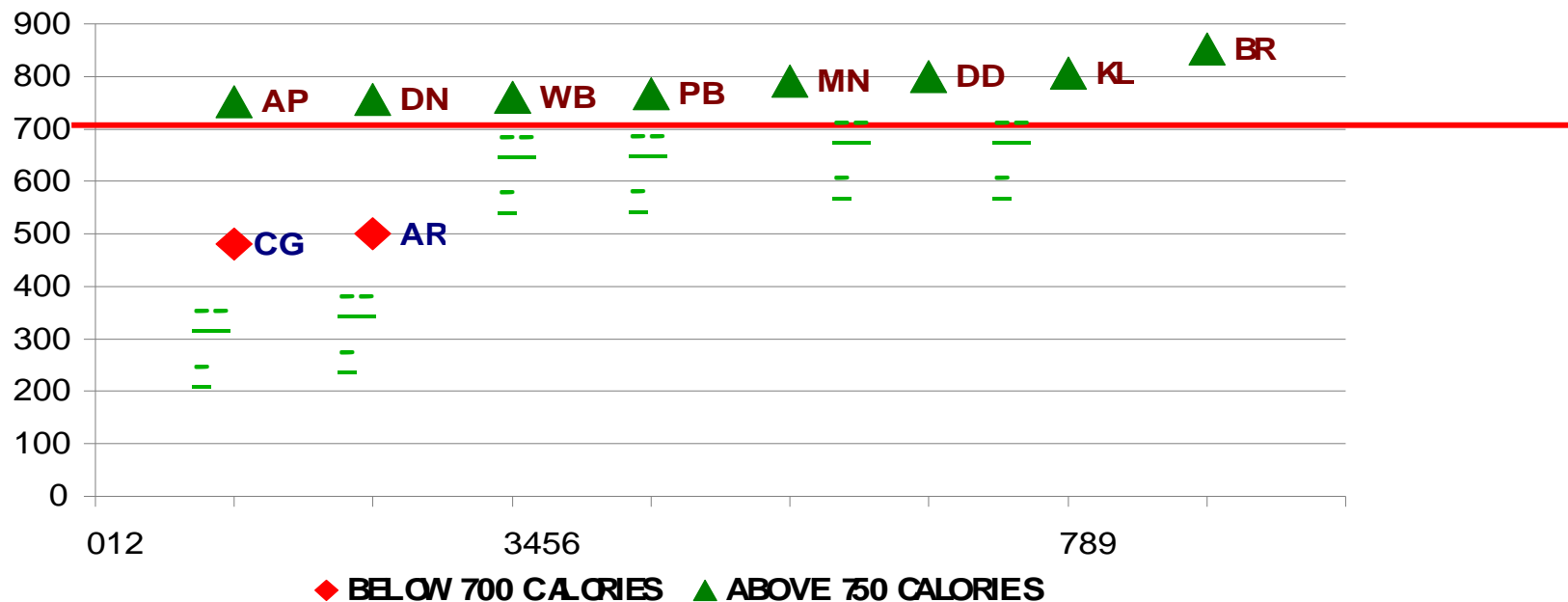
**Bihar**:30gms pulses, **Puducherry** ::130gms FG(553 cal) & 2 Eggs/Child/week,

# PAT-4A Nutrition Norm – CALORIES (Up. PY)



Norm of Calories = 700

❖ 24 states/UTs are providing calories as per norms.

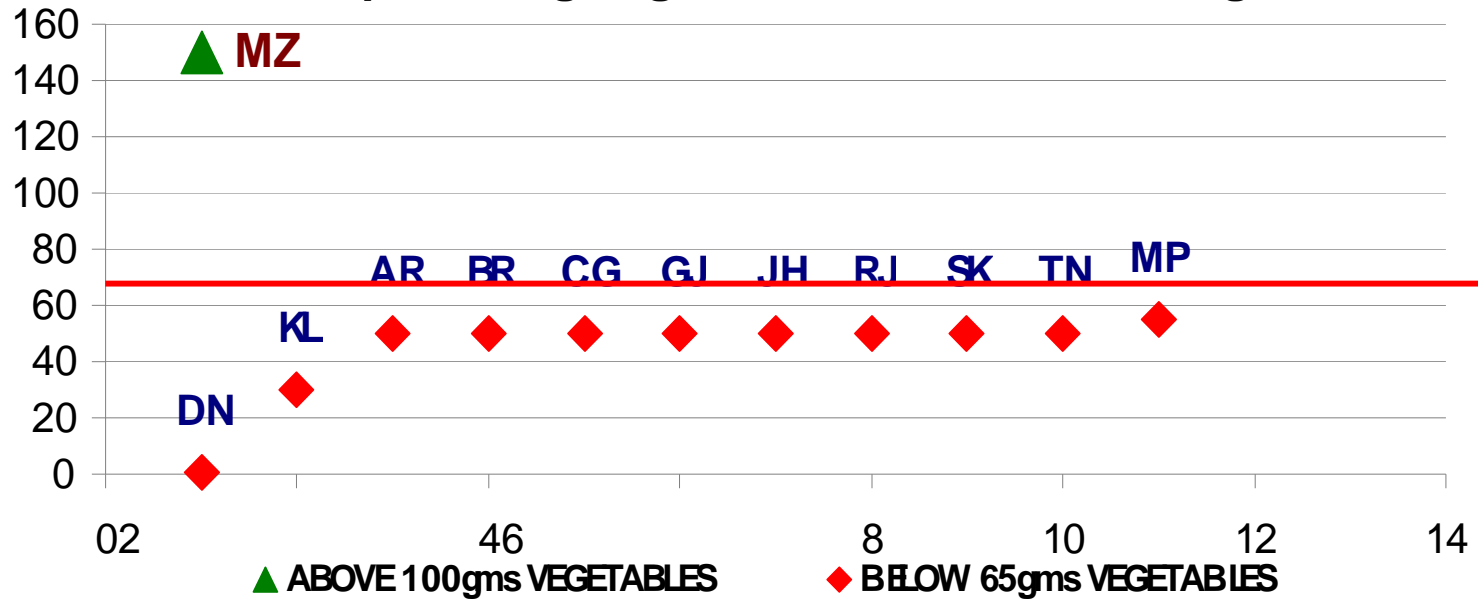


1. GOA no information. 3.KL ( 50 gm pulses - 60 cal thro eggs & coconut),
2. AR & CG (100gms).. 4.BR(40 gm pulses – 5 gm oils/ 58 cal)

# PAT-4B VEGETABLES PROVIDED : UPPER PRIMARY

Norm of Vegetables = 65gms

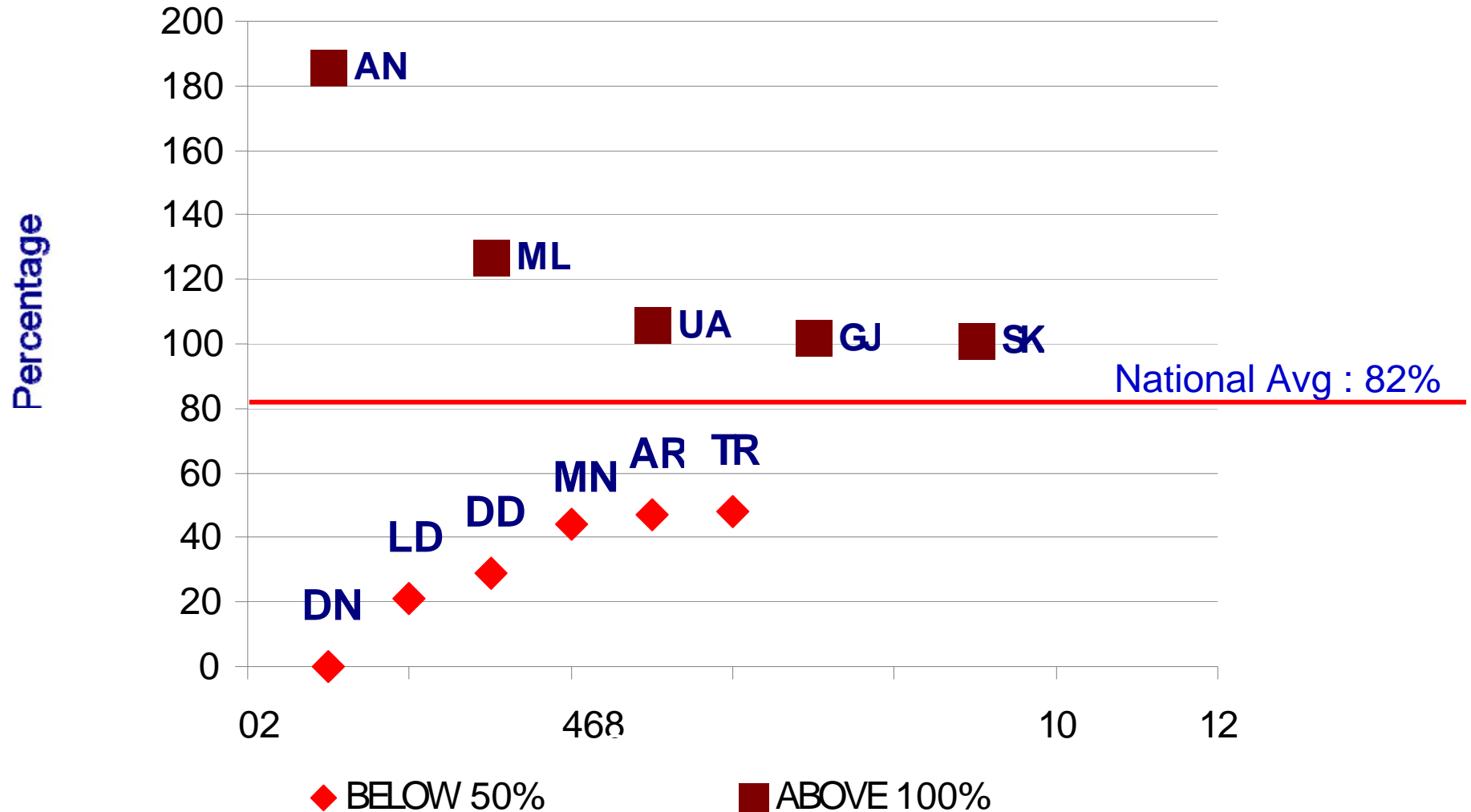
❖ 18 states/UTs are providing vegetables between 65-100 gms.



Orissa is not providing vegetables.

# PAT-5 FOODGRAIN LIFTING (PY)

❖ 24 States/UTs are in between 50% to 100%.

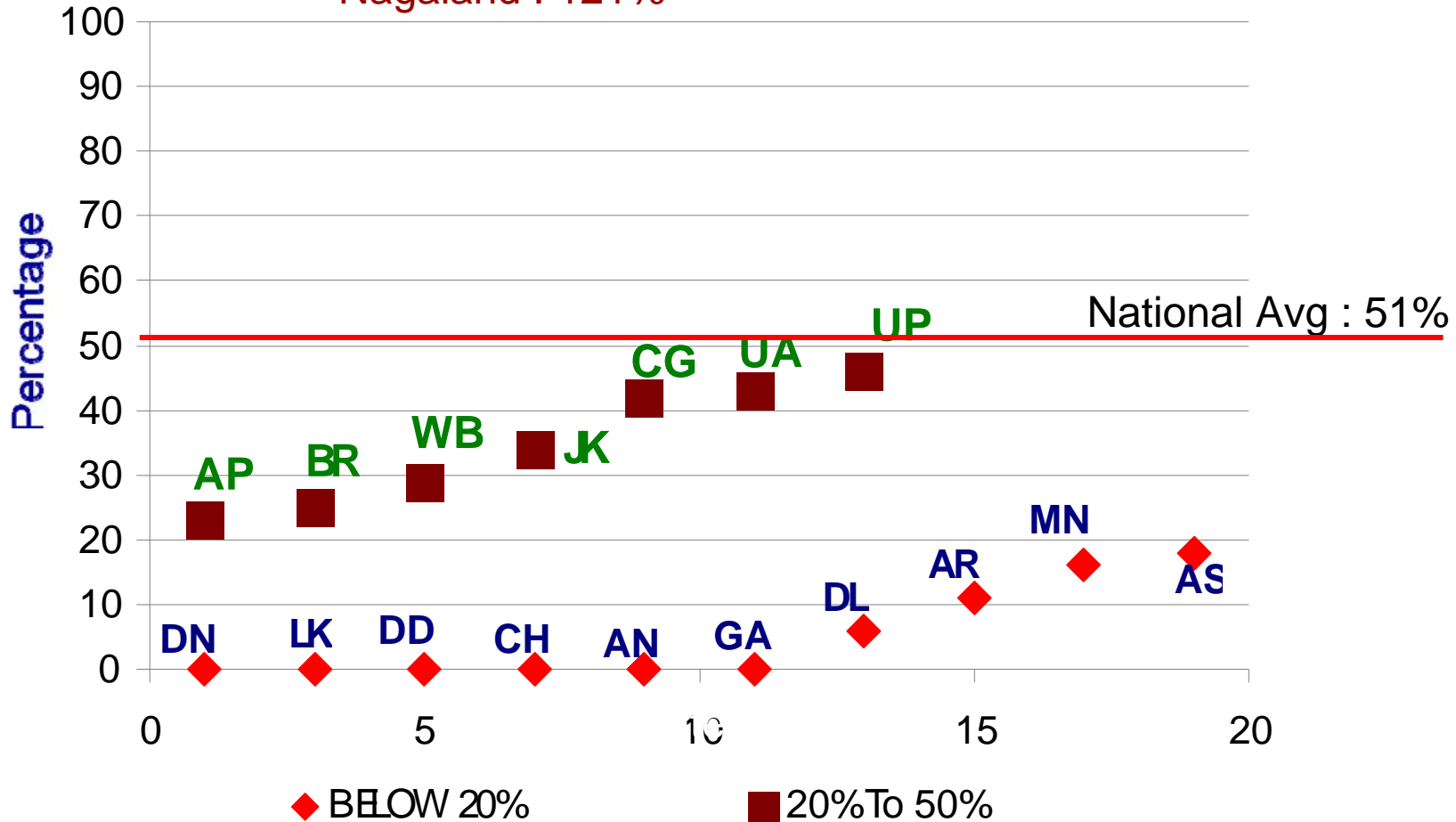


Lifting includes unspent balance as on 31.03.08.

# PAT-5A FOODGRAIN LIFTING 2008-09 (Up. PY)

❖ 17 States/UTs are in between 50% to 100%

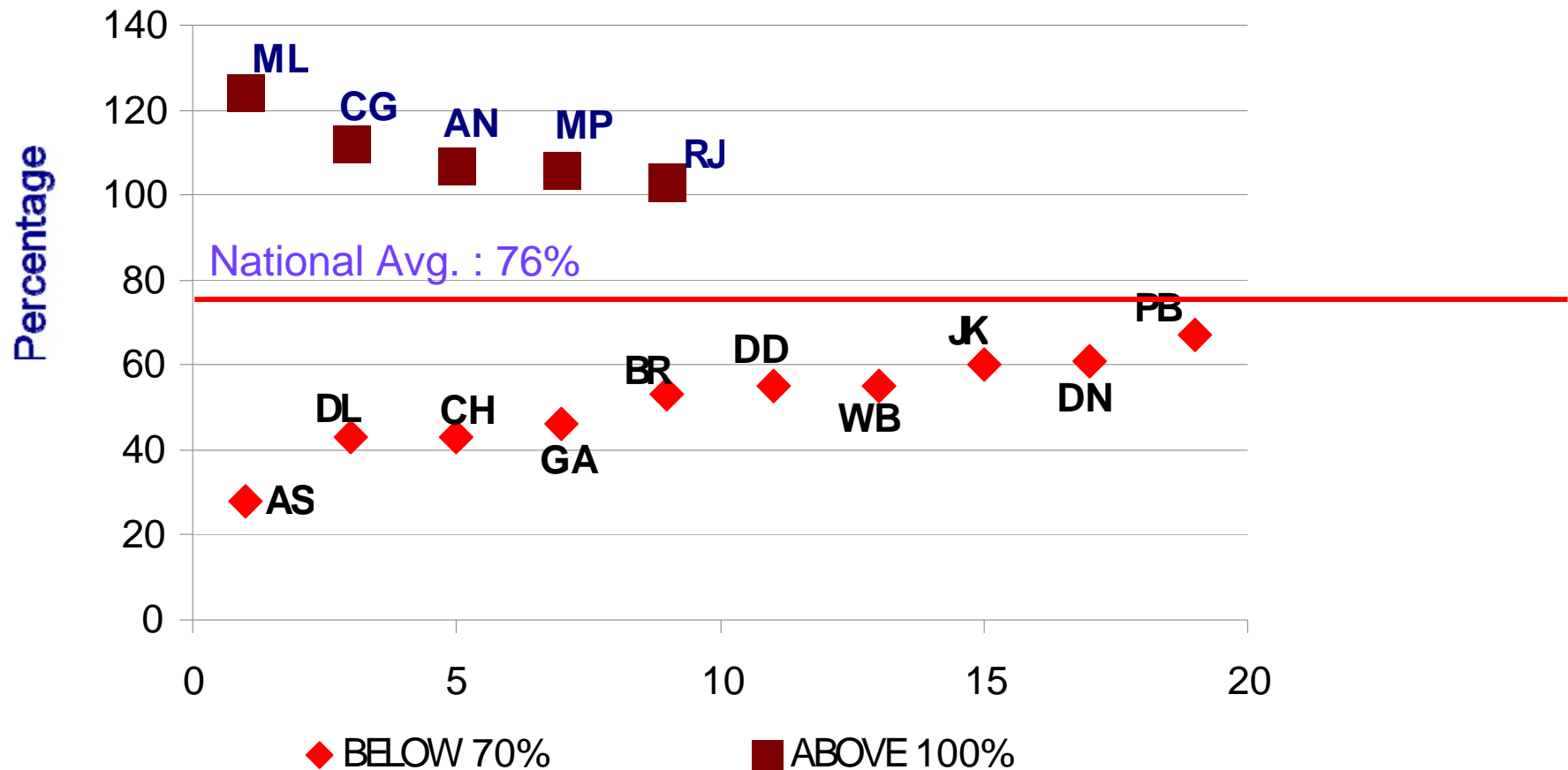
Nagaland : 121%



Lifting includes unspent balance as on 31.03.08.

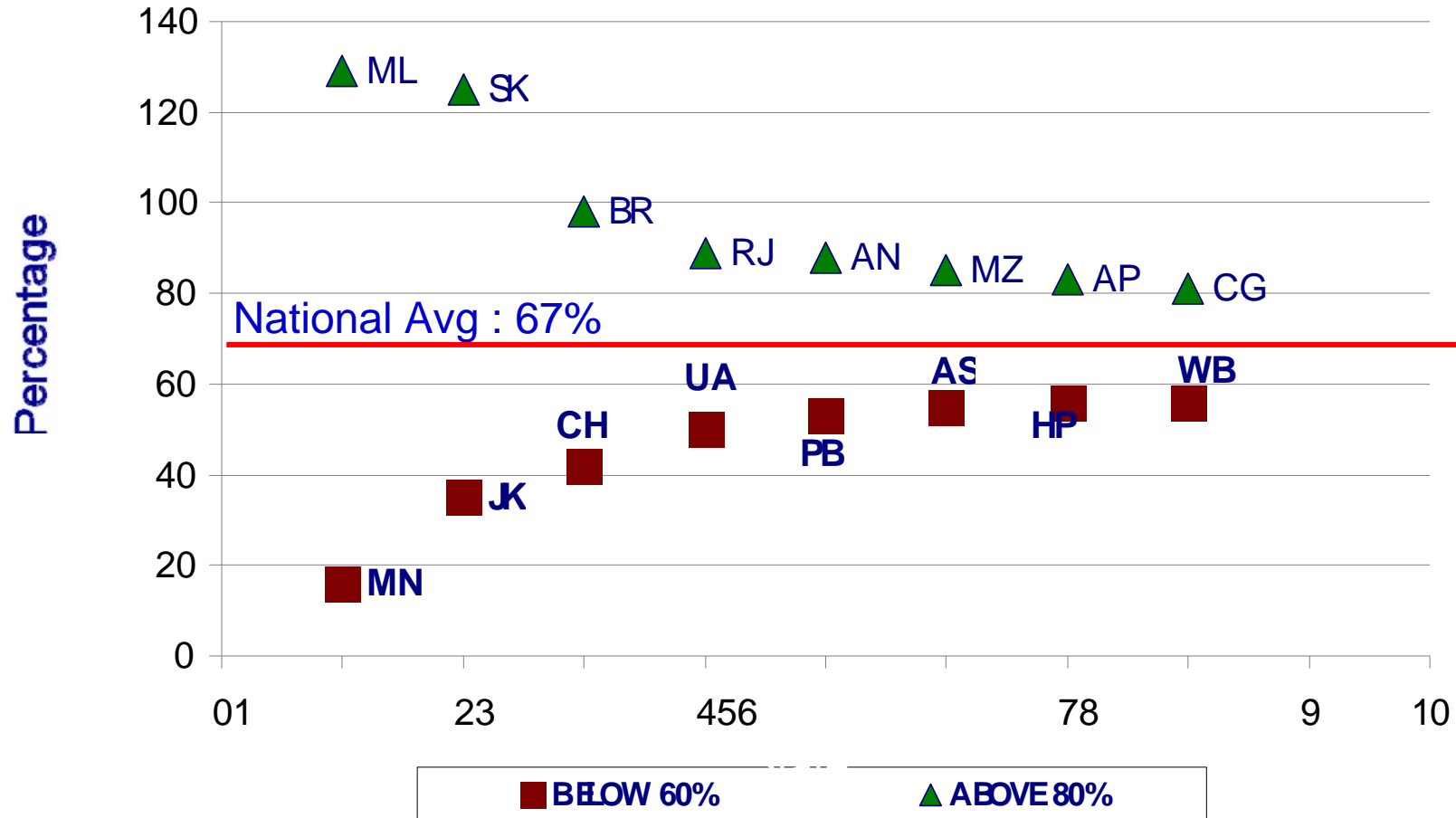
# PAT-6 FOODGRAINS UTILIZATION 2008-2009 (Py + Up. Py)

❖ 20 States/UTs are in between 70% to 100%



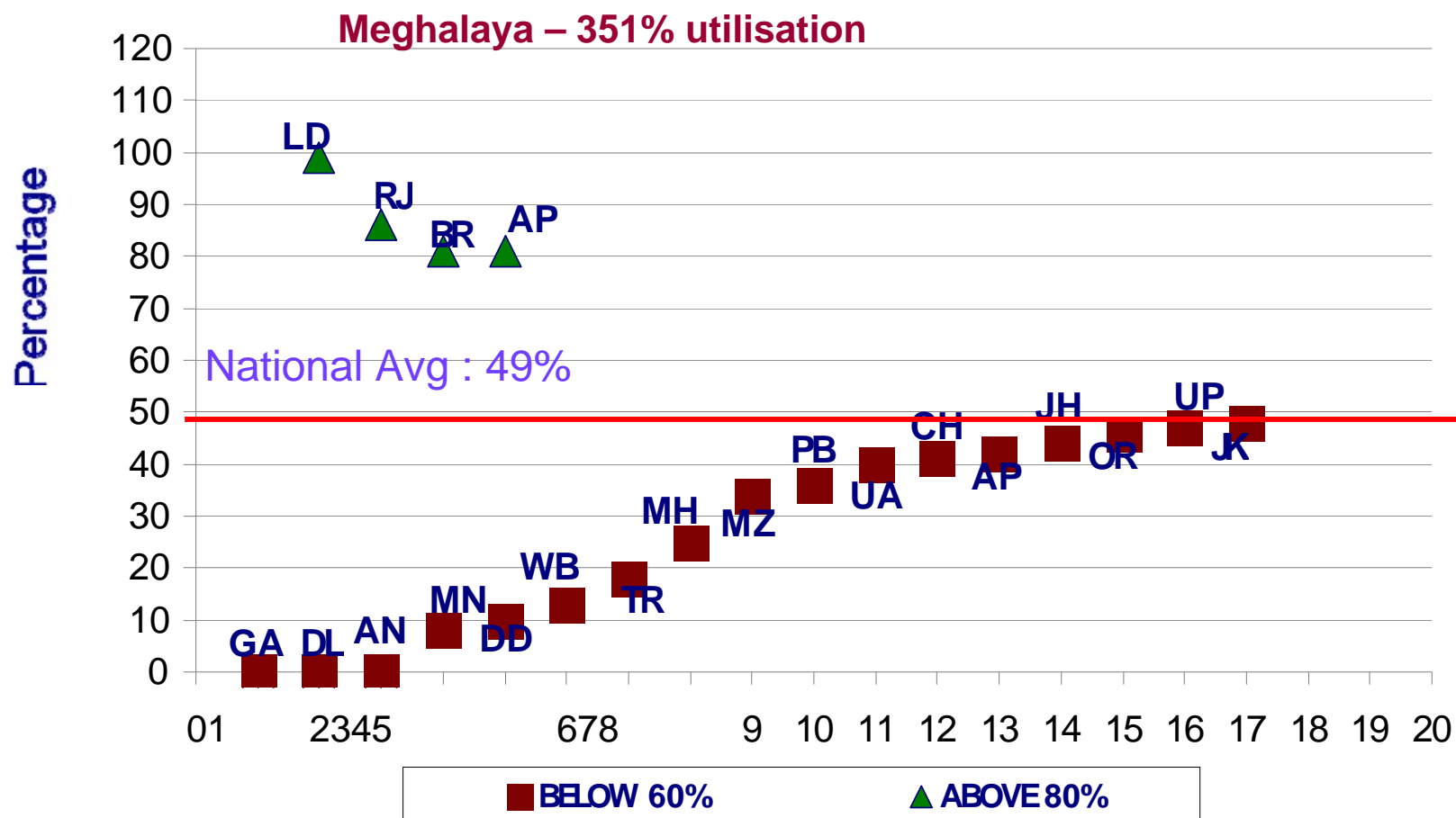
# PAT-7 Cooking Cost Utilisation (PY) up to 31-12-2008

❖ 18 States/UTs are in between 60% to 80%.



# PAT-7A Cooking Cost Utilisation (Up. PY) up to 31-12-2008

❖ 12 States/UTs are in between 60% to 80%.

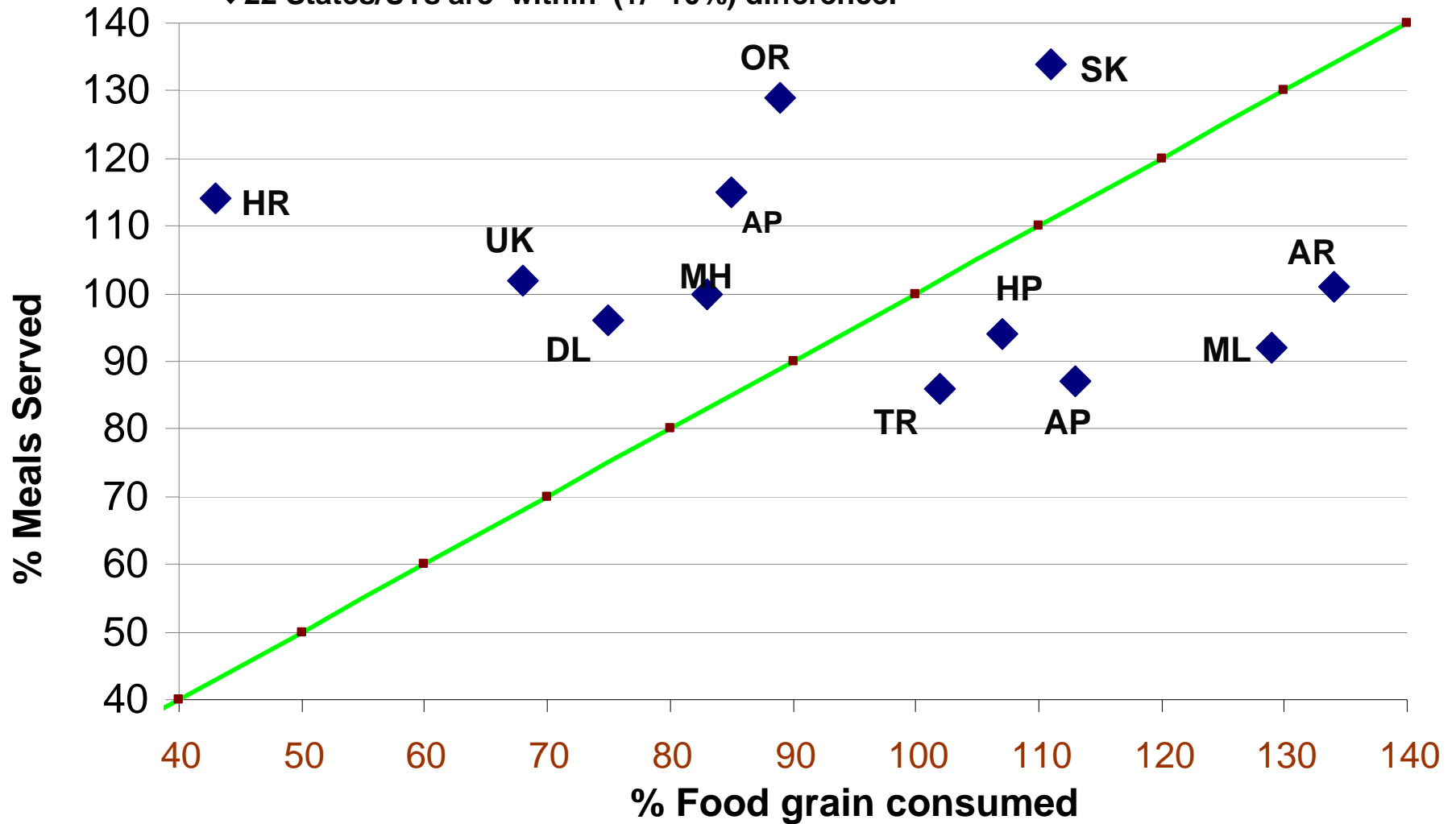




# PAT-8 Recon of food grain vs. No. of meals served (PY) - 01-04-2008 to 31-12-2008



❖ 22 States/UTs are within (+/- 10%) difference.

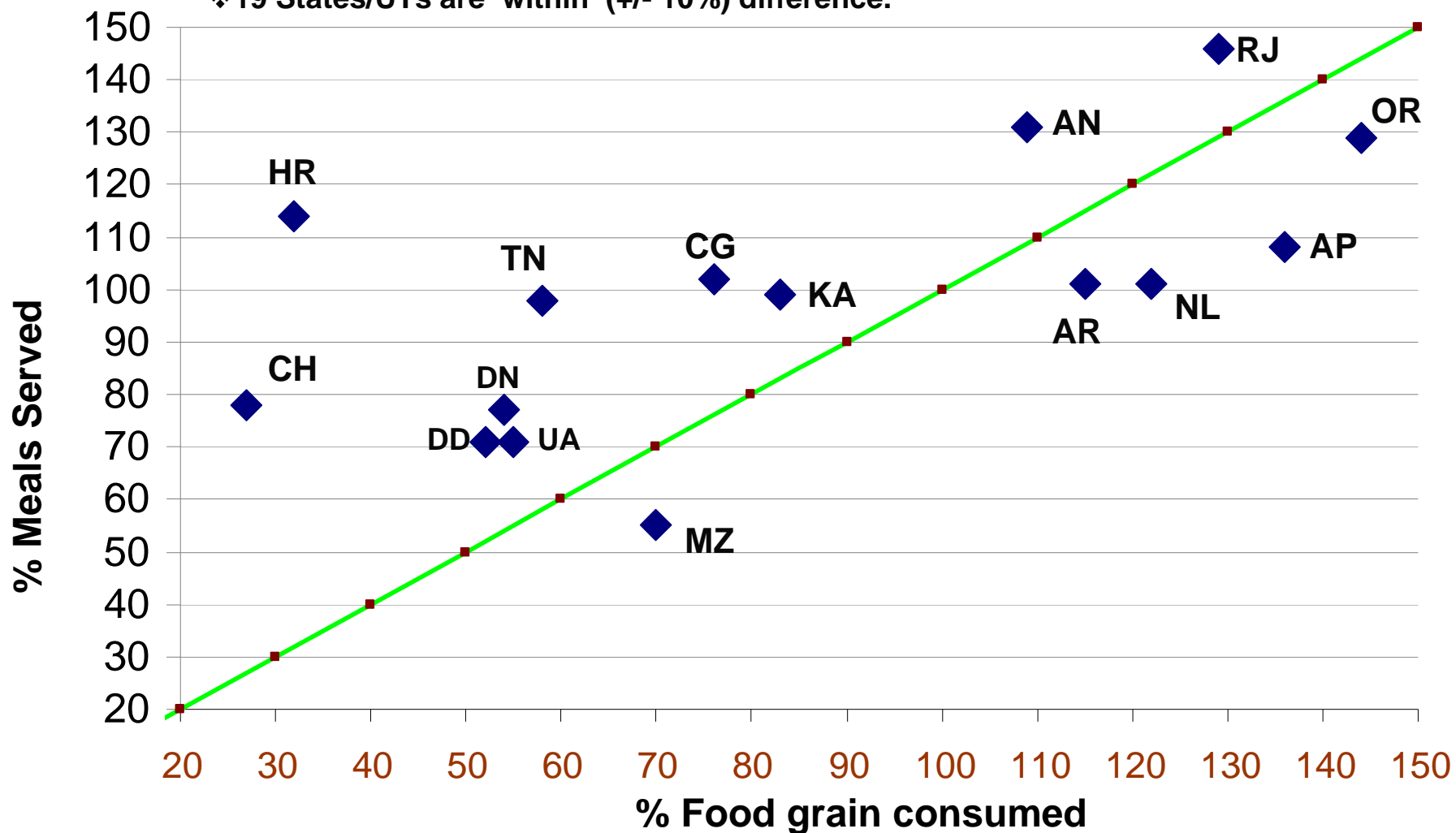


Note : Bihar has not furnished the figures of actual consumption of food grains separate for PY & U.PY

# PAT-8A Recon of food grain vs. No. of meals served (Up. PY) - 01-04-2008 to 31-12-2008

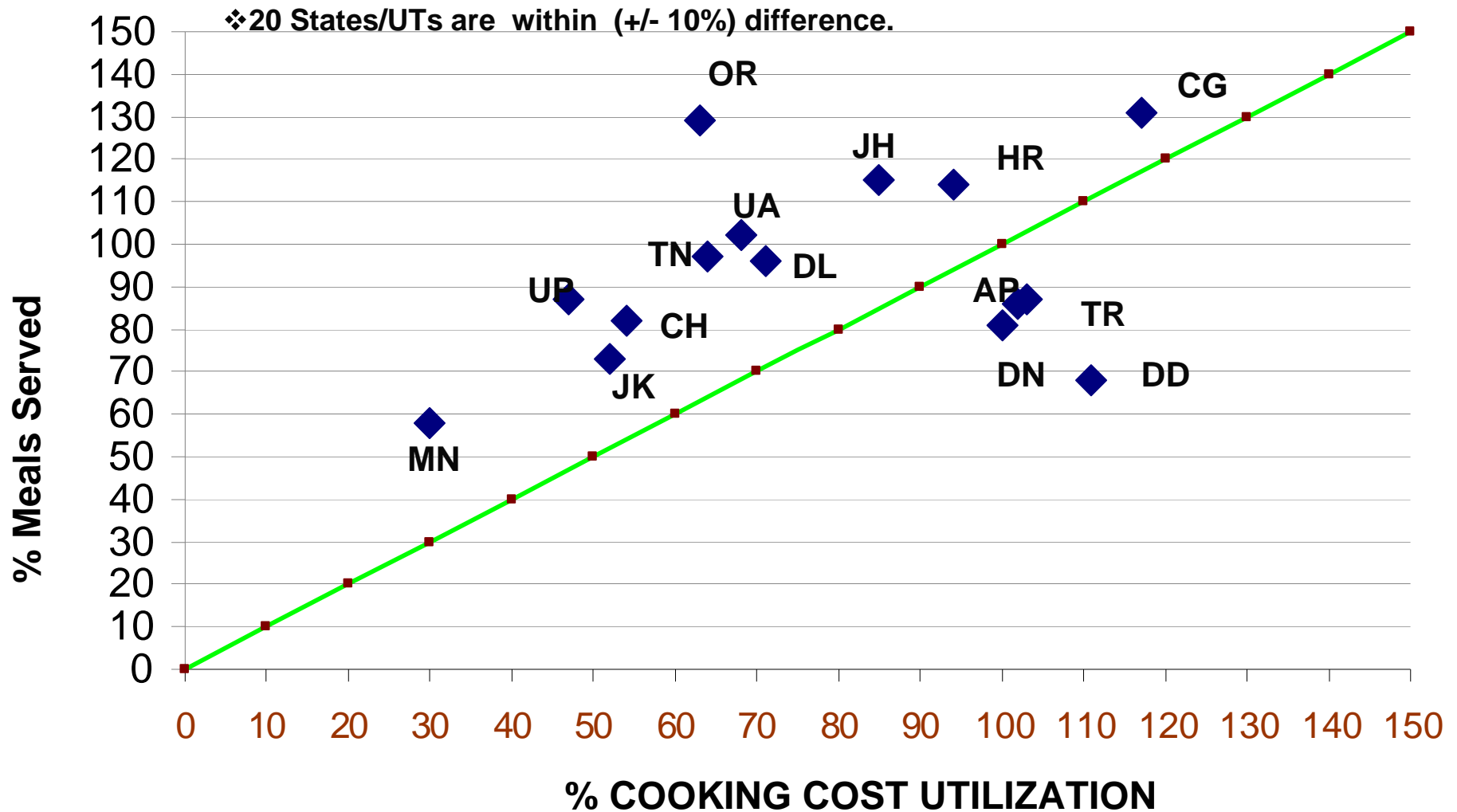


❖ 19 States/UTs are within (+/- 10%) difference.



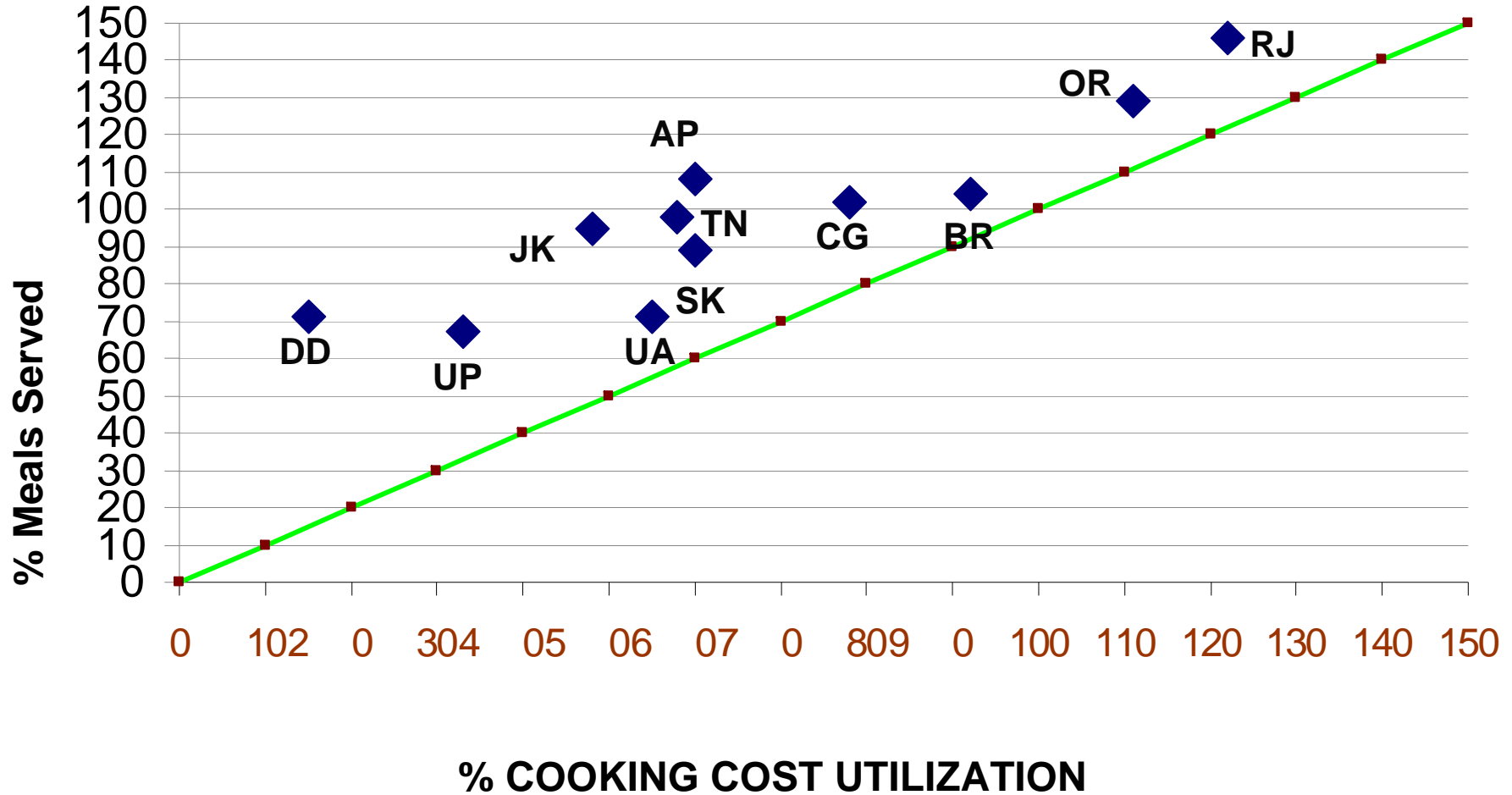
Note : Bihar has not furnished the figures of actual consumption of food grains separate for PY & U.PY

# PAT-9 Reconciliation of Cooking Cost vs. No. of meals served (PY) 01-04-2008 to 31-12-2008



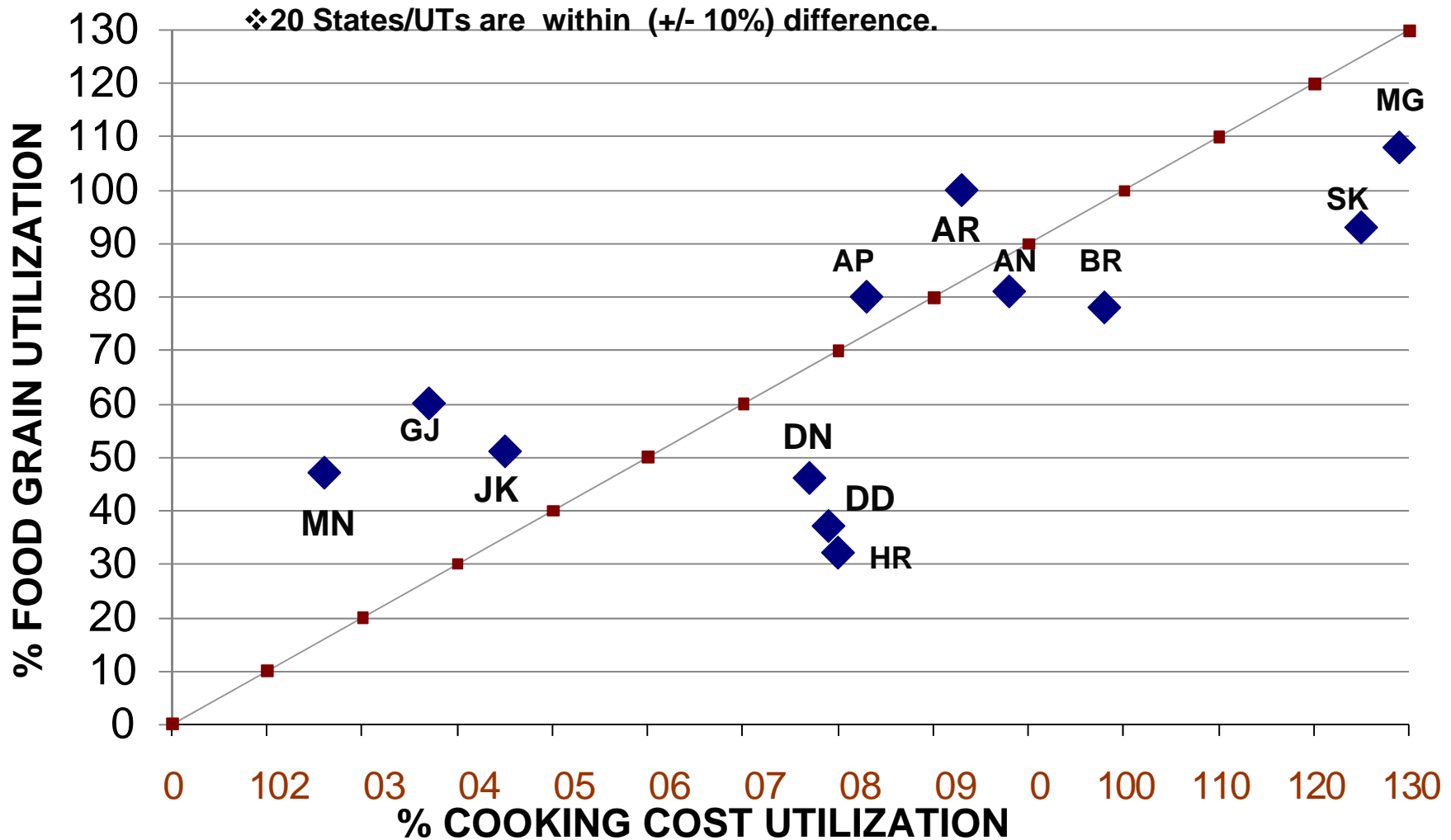
# PAT-9A Reconciliation of Cooking Cost vs. No. of meals served (Upper Primary) 01-04-2008 to 31-12-2008

❖ 20 States/UTs are within (+/- 10%) difference.



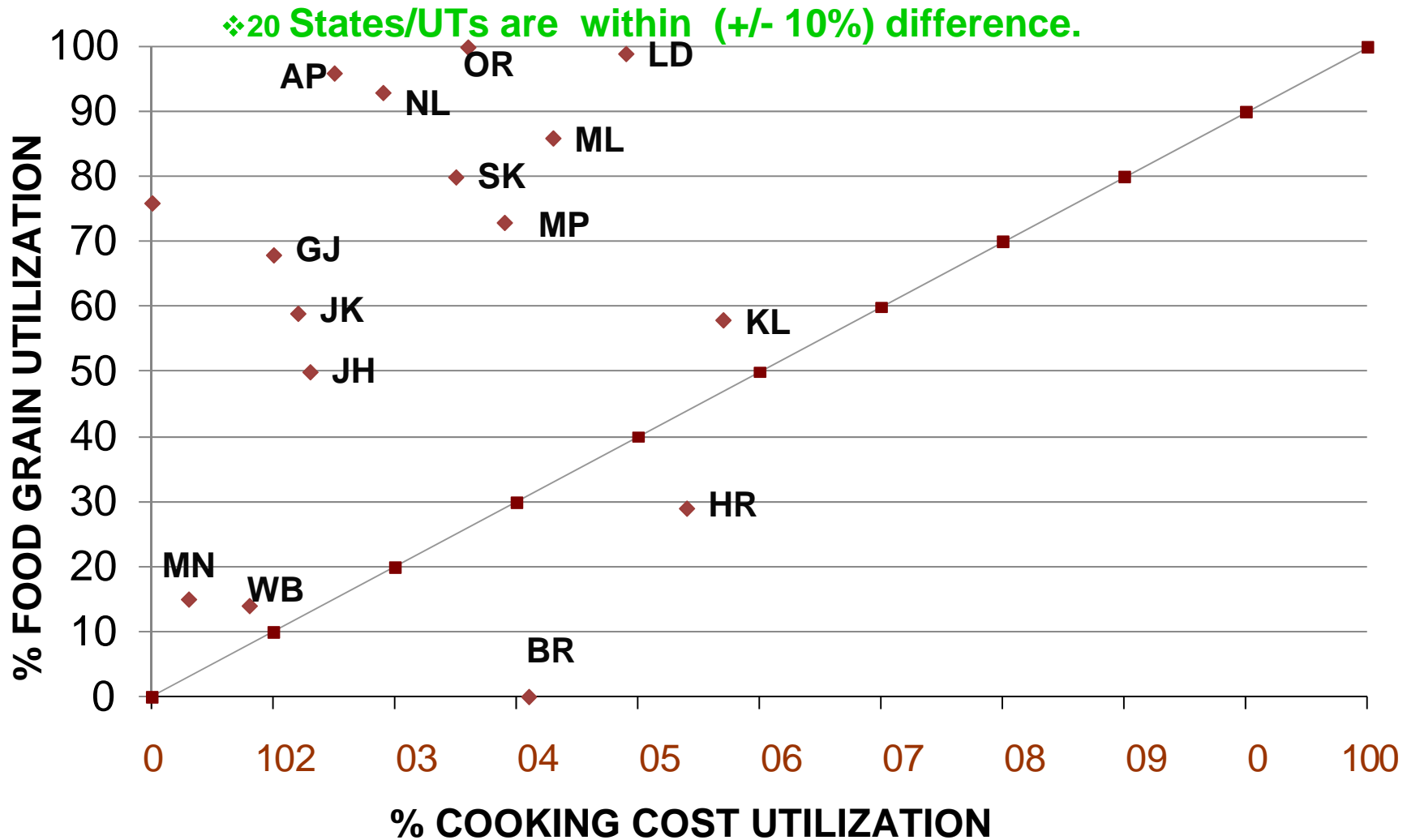
A&N islands, Chandigarh AND Manipur has not furnished the figures.

# PAT-10 Reconciliation of Cooking Cost vs. Food Grains (Primary) 01-04-2008 to 31-12-2008



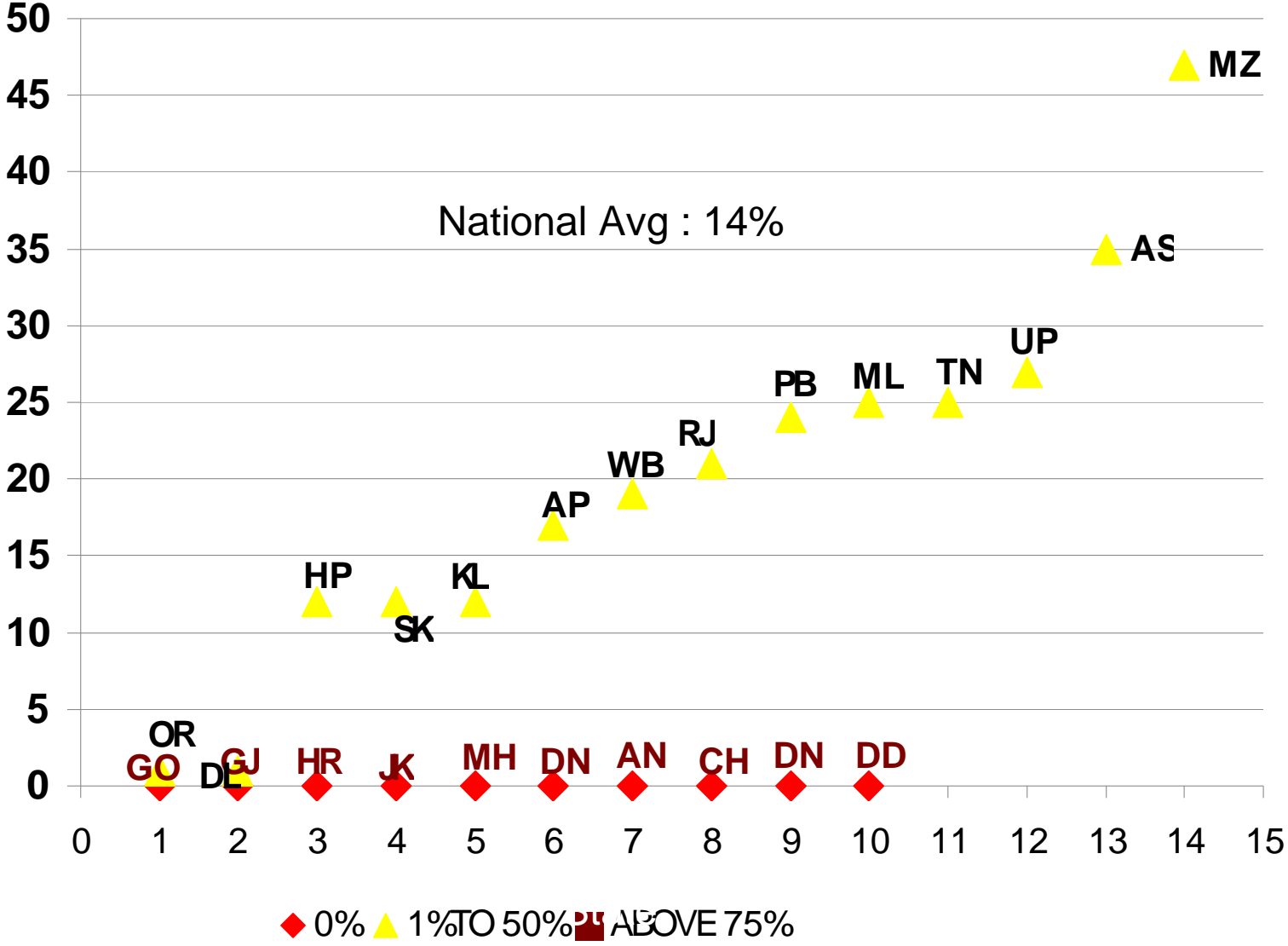
A&N islands, Goa, and Delhi has not furnished the figures.

# PAT-10A Reconciliation of Cooking Cost vs. Food Grains [Up. Py] 01-04-2008 to 31-12-2008



Goa, and Delhi has not extended the prog. Up to upper priamry.

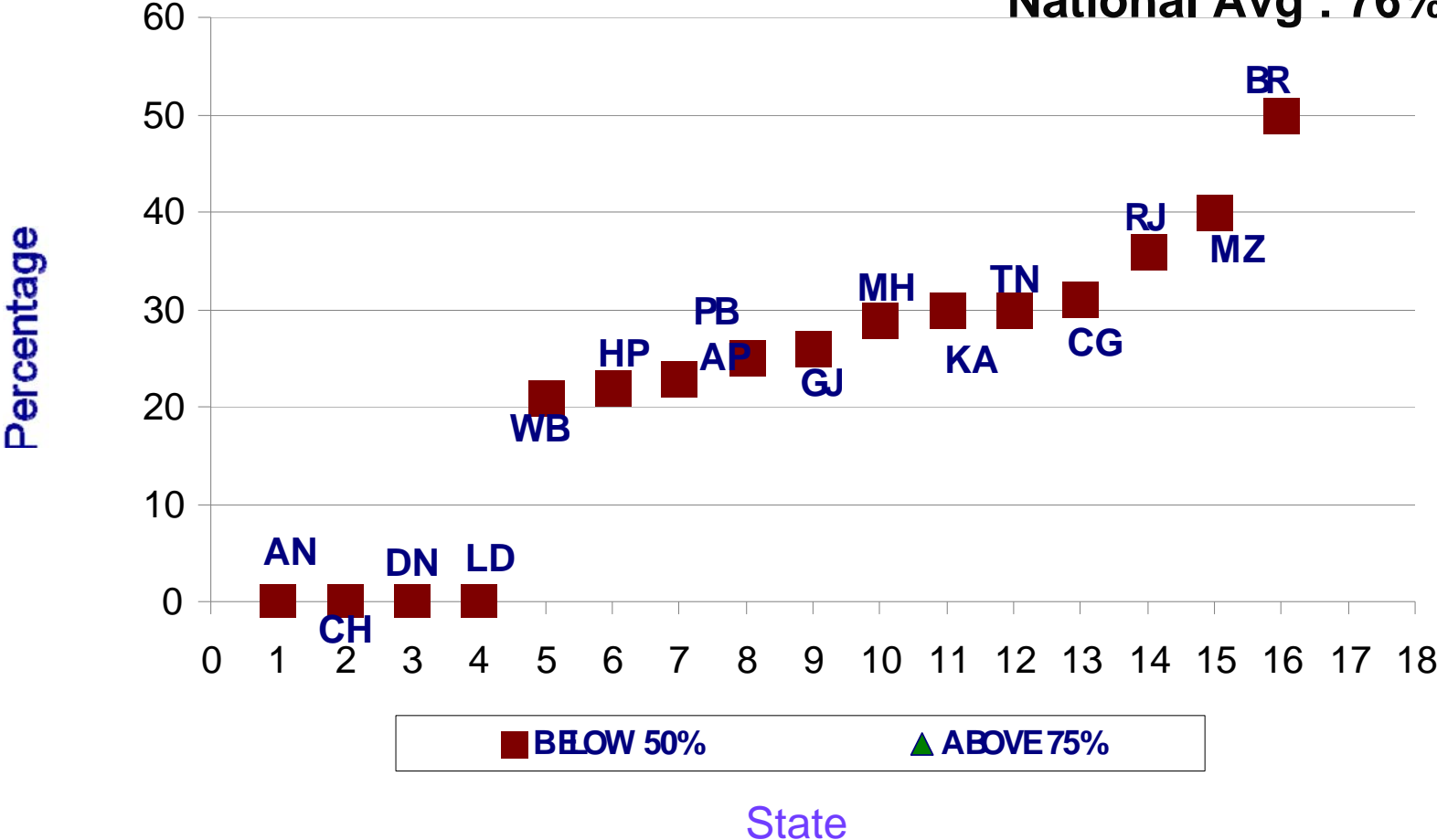
# PAT-11 MME Utilisation



# PAT-12 Construction of Kitchen sheds as on 31-12-08

9 States/UTs are in between 50% to 75%.

National Avg : 76%







Thank You